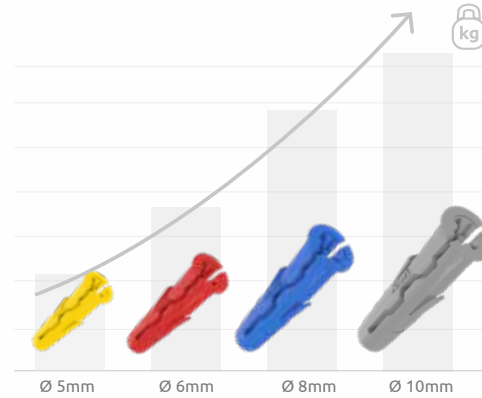


MAXIMUM LOAD

	Ø 5mm	Ø 6mm	Ø 8mm	Ø 10mm
Base material	max. load [kg]			
Concrete ¹	33	66	66	138
Solid ceramic brick ²	60	100	120	140
Hollow ceramic brick ³	24	30	36	36
Perforated ceramic brick ⁵	30	30	36	48
Solid calcium silicate brick ⁴	60	100	100	160
Plasterboard ⁶	8	10	18	17



¹ C20/25; ² min. 20 MPa; ³ min. 15 MPa; ⁴ min. 20 MPa; ⁵ min. 15 MPa; ⁶ min. thickness 12.5 mm
Load capacity compliant with National Technical Approval AT-15-8093/2016

PACKAGING TYPES



Line item	Ø	QTY per pack
UNO® plug		
R-U1-YEL-48-C	5	48
R-U1-YEL-96-C	5	96
R-U1-RED-48-C	6	48
R-U1-RED-96-C	6	96
R-U1-BRN-48-C	7	48
R-U1-BRN-96-C	7	96
R-U1-BLU-40-C	8	40
R-U1-BLU-80-C	8	80
R-U1-GRY-40-C	10	40
R-U1-GRY-80-C	10	80

Line item	QTY per pack
UNO® plug	
UNO-K-05	200
UNO-K-06	200
UNO-K-07	100
UNO-K-08	100
UNO-K-10	50
UNO® plug with a screw	
UNO-05+330	100
UNO-06+430	100
UNO-06+445	100
UNO-08+435	100
UNO-08+560	100
UNO-10+540	100
UNO-10+660	100

Line item	QTY per pack
UNO® plug	
R-S1-UNO-05/20	20
R-S1-UNO-06/16	16
R-S1-UNO-07/40	40
R-S1-UNO-08/12	12
R-S1-UNO-08/30	30
R-S1-UNO-10/20	20
UNO® plug with a screw	
R-S1-UNO-05+/12	12
R-S1-UNO-05+/40	40
R-S1-UNO-06+/10	10
R-S1-UNO-06+/24	24
R-S1-UNO-07+/24	24
R-S1-UNO-08+/20	20
R-S1-UNO-10+/15	15



Line item	Ø	QTY per pack
UNO® plug		
R-C1-UNOBLU	8	500
R-C1-UNORED	6	1000
UNO® plug with a screw		
R-C1-UNORED+	6	500
R-C1-UNOBLU+	8	300
R-C1-UNOGRY+	10	200

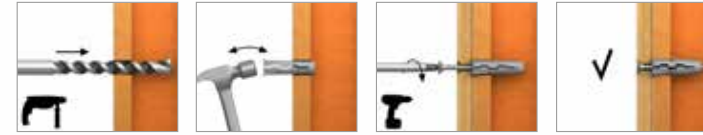


Line item	Ø	QTY per pack
UNO® plug with a screw		
R-CC1-UNOBRN+	7	400
R-CC1-UNORED+	6	500



Line item	QTY per pack
UNO® plug with a screw	
R-SL1-UNO-05+3530	100
R-SL1-UNO-06+4035	100
R-SL1-UNO-07+4040	100
R-SL1-UNO-08+4540	100
R-SL1-UNO-10+5045	50

INSTALLATION GUIDE



BASE MATERIAL

concrete; hollow concrete slab;
lightweight concrete block;
aerated concrete; solid ceramic
brick; hollow ceramic brick;
perforated ceramic brick; solid
calcium silicate brick; natural
stone; plasterboard



**UNIVERSAL PLUG
PERFECT FOR EVERYONE**



**MOST POPULAR FIXING
NO SURPRISES**

Trust & Innovation

uno.rawlplug.co.uk

Rawlplug Ltd
Skibo Drive
Thornliebank Industrial Estate
Glasgow G46 8JR

Tel: +44 (0) 1 41 6387 961
rawlinfo@rawlplug.co.uk
www.rawlplug.co.uk



